



Patch Installation Instructions *T7.0 Release*

CONTENTS

INTRODUCTION	1
PATCHING IMPROVEMENTS IN T7	1
DOES MY INSTALLATION REQUIRE PATCHING	1
AUTOMATIC PATCH INSTALLATION.....	2
Linux (Redhat, Ubuntu)	2
Windows (Vista,7,8)	2
MANUAL PATCH INSTALLATION	2
Downloading patches using HTTP in a browser	2
Downloading patches using FTP at the command line	3
Installing patches at the command line on Linux	4
Installing patches at the command line on Windows/VM.....	5
Installing patches at the command line on Windows/MKS	6

INTRODUCTION

T7 is being continually maintained in terms of bug fixes and enhancements. Badleys relies on its user community to feedback information regarding useability, performance and enhancement requests. Part of the life-cycle of a major release involves patch releases.

Though they are referred to as patches, the patches themselves may contain enhancements as well as bug fixes.

Patches for T7 can be installed automatically using the autoPATCH utility or manually by downloading patch-files from the Badleys download site. Patches downloaded from the Internet are internally check-summed to guard against tampering and are verified prior to installation.

When a patch is successfully installed the T7 version number will change to reflect the new patch level (e.g. 7.001, 7.002 etc.).

PATCHING IMPROVEMENTS IN T7

New to T7, the patching system now uses the HTTP (web) protocol to access the Badleys download site. This is a simpler and more robust method than the previous FTP-based system and should make patching T7 quicker and easier than before.

In addition, patches are now distributed as 'diffs', containing only the changes from the previous version. This results in significantly smaller patches and faster downloads.

DOES MY INSTALLATION REQUIRE PATCHING

If the machine from which you run T7 has Internet access then each time it is started it automatically checks to see if the installed version is out of date with the current release level - if it is, an information popup window is displayed indicating that your installation is not at the latest patch level. If you do not have Internet access from the host machine, the simplest way to check the release level is to find a machine that does permit access and follow either the "Automatic Patch Installation" or "Manual Patch Installation" instructions below. You can determine the version of your installation using the "Help->About T7" option in the main control menu.

If your version is out-of-date with the current release level it is strongly recommend that you update it as soon as possible.

AUTOMATIC PATCH INSTALLATION

This is, by far, the easiest method of patch installation. The autoPATCH utility will bring T7 up-to-date by downloading and installing all of the necessary patches.

Linux (Redhat, Ubuntu)

Firstly, you must be logged in to a system that has Internet access, as the owner of the T7 installation. Then, at the command-line, do the following:

```
% cd <T7_HOME>/patches
% ./autoPATCH
```

Follow the instructions that are given. When the patch-installation is complete you must restart the T7 application. The release notes for all the patches will be in a file called "relnotes" within the <T7_HOME>/patches directory.

Windows (Vista, 7, 8)

The autoPATCH procedure is accessed from the Windows start menu, under the T7 sub-menu. Selecting this option will invoke the autoPATCH procedure in a command window. Follow the instructions that are given. When the patch-installation is complete you must re-start the T7 application. The release notes for all the patches will be in a file called "relnotes" within the <T7_HOME>/patches directory.

MANUAL PATCH INSTALLATION

Whilst the automatic patching system uses HTTP exclusively, patches may be manually obtained from our download site via either HTTP or FTP.

Access using both methods requires the username 't70user' and password 't3rrap1n' (note, the characters in bold are numerals).

Downloading patches using HTTP in a browser

Patches may be downloaded in a browser via HTTP using the following URL:

```
http://download.badleys.co.uk/t70user
```

You will be prompted for the above username and password. In the page that appears, click the "patches" folder. To download each patch, right click and choose "Save As...". Downloaded patches should be copied into the T7 patch directory "<T7_HOME>/patches" after the download is complete.

Downloading patches using FTP at the command line

You must be logged in to a system that has FTP access to the Internet, as the owner of the T7 installation. Then, at the command-line, type the following:

```
% cd <T7_HOME>/patches
% ftp download.badleys.co.uk
```

At this point you must specify a user-name and password. Log in as user "t70user" and give "t3rrap1n" as the password (note, the characters in bold are numerals).

```
ftp> cd patches
ftp> ls
```

You will see a list of files something like this:

```
P7.001.pat
P7.002.pat
P7.003.pat
P7.004.pat
plist
relnotes
rlvl
```

The ".pat" files are the patch files. You should aim to download only those files with a version greater than the current version of your installation. For example, if the current version of your installation is 7.002 then you should download the patch files P7.003 and P7.004 (in the above example). The following commands are provided as example for an installed version of 7.002; you should amend the commands that you issue according to your version and the list of available patches.

```
ftp> binary
ftp> get P7.003.pat
ftp> get P7.004.pat
ftp> get relnotes
ftp> bye
```

```
% ls -l
```

Check that the patches have been downloaded successfully.

Installing patches at the command line on Linux

Assuming the required patches have been downloaded into the T7 patches directory, then at the command-line, type the following to change to the patches directory:

```
% cd <T7_HOME>/patches
```

Now install the patches using the installPATCH utility. It is important that the patches are installed in the correct sequence (i.e. oldest first) though a patch will not normally install out of sequence unless it is permitted to.

```
% ./installPATCH P7.003 P7.004
```

Follow the instructions that are given. When the patch-installation is complete you must re-start T7.

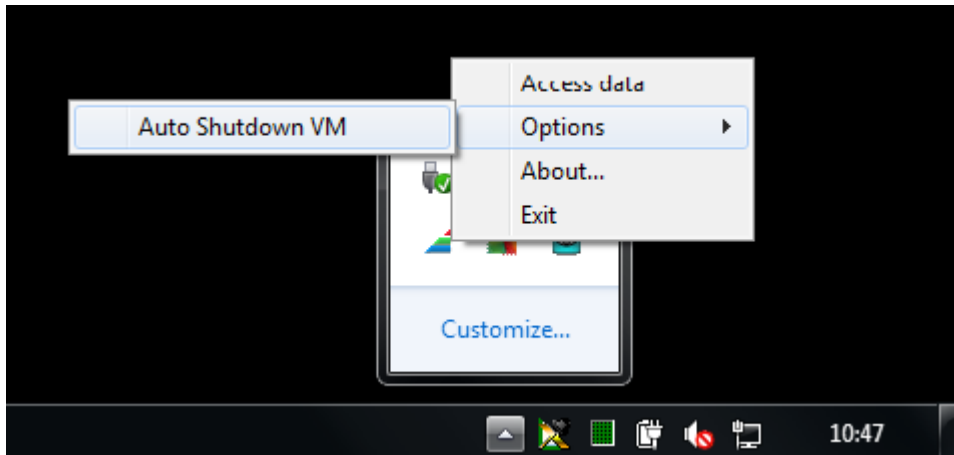
The release notes for all the patches should be in the file called "reInotes".

That's it!

Please e-mail any problems or queries to: support@badleys.co.uk

Installing patches at the command line on Windows/VM

1. Start T7 as normal from the Start Menu entry.
2. Once T7 has started, locate the T7 system tray icon and toggle *off* the “Auto Shutdown VM” option:



3. Assuming the patches have already been downloaded, copy the files into the root directory of the [\\T70-VM](#) share (or the corresponding mapped drive letter).
4. Launch a “General xterm” from the T7 control application “Utilities” menu.
5. Close the T7 control application by choosing “Project->Exit” from the menu.
6. In the xterm opened in step 4, change directory to the patches directory:

```
% cd /opt/T70/patches
```

7. Move the patches copied in step 3 into the patches directory:

```
% sudo mv ~/.pat .
```

8. Now install the patches using the installPATCH utility. It is important that the patches are installed in the correct sequence (i.e. oldest first) though a patch will not normally install out of sequence unless it is permitted to.

```
% sudo ./installPATCH P7.003 P7.004
```

Follow the instructions that are given.

9. Once the patches are installed, re-enable the “Auto Shutdown VM” option from the T7 system tray icon (similar to step 2). T7 should then automatically shutdown and the patching is complete.

The release notes for all the patches should be in the file called "reInotes".

That's it!

Please e-mail any problems or queries to: support@badleys.co.uk

Installing patches at the command line on Windows/MKS

1. Open the Windows "Command Prompt" as Administrator by right clicking the Start menu entry and choosing "Run as Administrator"
2. In the Command Prompt, change directory to the patches directory in the installation with:

```
% cd "C:\Program Files\T70\patches"
```

3. Now install the patches using the installPATCH utility. It is important that the patches are installed in the correct sequence (i.e. oldest first) though a patch will not normally install out of sequence unless it is permitted to.

```
% csh installPATCH P7.003 P7.004
```

Follow the instructions that are given.

The release notes for all the patches should be in the file called "relnotes".

That's it!

Please e-mail any problems or queries to: support@badleys.co.uk