

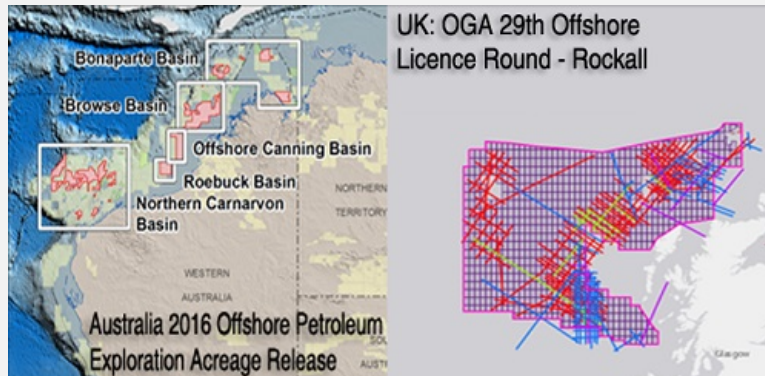
# LICENCE ROUND BULLETIN



[follow us on Twitter](#) | [LinkedIn](#) | [pdf version](#) | [feedback](#) | [forward to a friend](#)

## Badleys Products Available for the UK & Australian Licence Rounds

Licence Rounds are currently open for acreage offshore NW UK and offshore NW Australia. Badleys have products and techniques which will assist exploration screening in both areas.



## UK 29th Offshore Licensing Round - Rockall Trough

Earlier this year, as part of the **OGA Exploration Licence Competition**, Badleys were awarded funding for a pilot study in the area of the UK Rockall Trough. The results of this study now reside as a report with the OGA (UK Oil and Gas Authority).

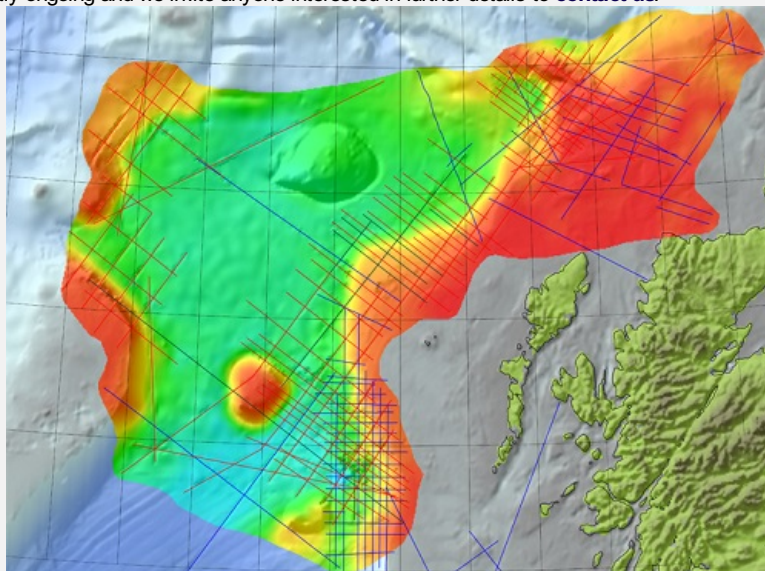
The pilot study was a 2D study of crustal thickness, basin stretching and heat-flow in the Rockall Trough. Following the success of this study Badleys have decided to develop this initial work into a full 3D study of the UK Rockall Trough, using all of the seismic data made publically-available by the OGA (see map below).

By using the techniques of 3D-gravity inversion (OCTek) and 3D-backstripping the new study uses a map of seismic top-basement, interpreted by Badleys from the OGA data, to produce maps of:

- Crustal thickness
- Stretching-factor and thinning-factor
- Top basement heat-flow history

for the AOI highlighted in the map below. We believe that these results will be of interest to anyone evaluating the Rockall Trough for the **29th Licensing Round**.

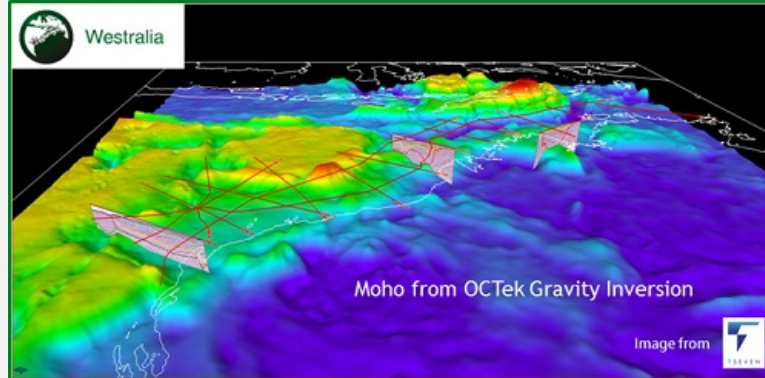
This work is currently ongoing and we invite anyone interested in further details to [contact us](#).



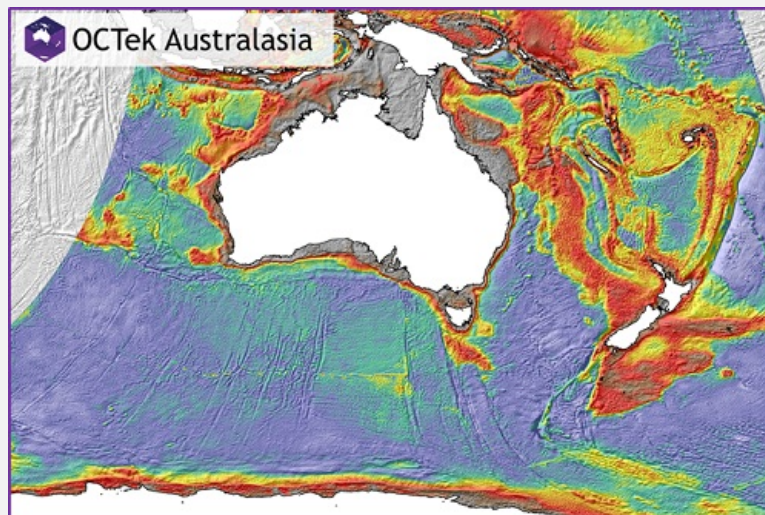
## Australia 2016 Offshore Petroleum Exploration Acreage Release

The current Australian Licensing Round focusses on the area of the **Australian NW Shelf**. Badleys have two products which will assist exploration screening in this area.

**OCTek Seismic Westralia** - This study has investigated the crustal structure of the NW Shelf and is based on a quantitative analysis of the ION Geophysical WestraliaSPAN seismic survey. The study has been performed using ION's interpretation of the seismic data. Further details of the study can be found on our [website](#).



**OCTek Australasia** - This study has applied the OCTek gravity inversion technique to the entire Australasian offshore area and will be of interest both for the current licence round and other opportunities for exploration assessment across the area. The study has focussed on defining the crustal structure and crustal characteristics of the continental margins surrounding Australia and New Zealand. Further details of the study can be found on our [website](#).



*Crustal thickness offshore Australasia, from OCTek gravity inversion*

We invite anyone interested in further details of either Australian study to [contact us](#).

[follow us on Twitter](#) | [LinkedIn](#) | [pdf version](#) | [feedback](#) | [forward to a friend](#)



E: [info@badleys.co.uk](mailto:info@badleys.co.uk) T: +44(0)1790 753 472  
[www.badleys.co.uk](http://www.badleys.co.uk)