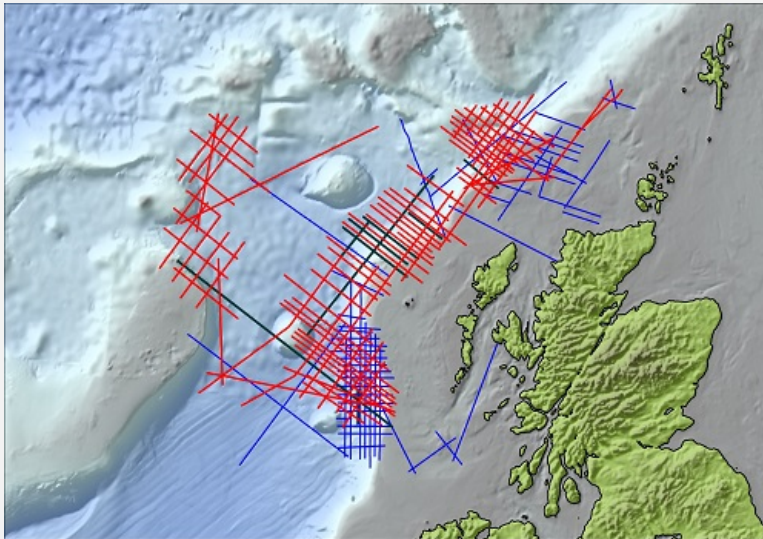


Badleys awarded OGA grant for Rockall study

Badleys have been awarded "seed funding" as part of the Oil & Gas Authority's Government-Funded Exploration Licence Competition (more info [here](#)). We will be investigating the UK sector of the Rockall Trough, with the aim of producing models for top-basement heat-flow into the basin. The workflow for the project involves seismic interpretation (in TrapTester/T7), OCTek gravity inversion and backstripping, all of which feed results through to the heat-flow modelling. The "seed funding" will support an initial 2D (section-based) study, already under way, with the hope that this will lead to a full 3D (map-based) study later in the year.



Badleys to exhibit at IPA Jakarta



Badleys will have a strong presence at the IPA, held in Jakarta this May 25th to 27th. If last year is anything to go by (above) it will be a busy event! Come see us at **Booth #AS56** to discuss all things structural and the latest developments in T7/TrapTester. We invite you to drop by at your convenience, but should you wish to book a dedicated demo slot then simply [contact us](#).

IN THIS ISSUE

- OGA Award
- IPA Jakarta
- Basin Mastery Workshop
- Carbonate Fault Rock Project

BADLEYS CALENDAR

IPA Jakarta
25 - 27 May 2016, Indonesia

Badleys will have a presence in the exhibition hall of the Jakarta Convention Center for the 40th IPA Convention and Exhibition 2016. More detail in this newsletter.
Event details are available [here](#).

PESGB Basin Mastery Course
7 June 2016, London

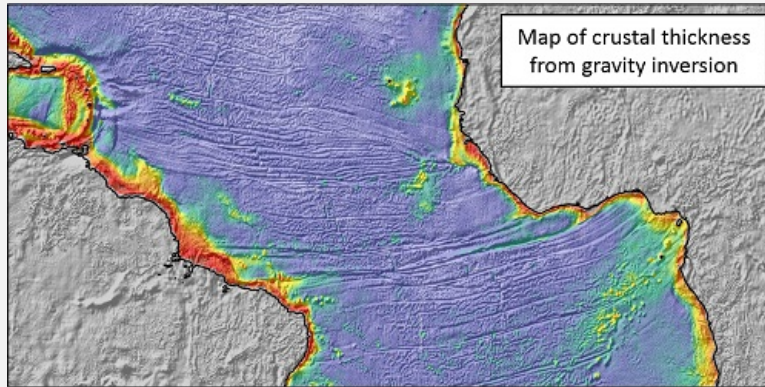
Badleys will present at this workshop on Atlantic Equatorial Basins. It is being held at the PESGB training facility in Croydon, more detail in this newsletter.

AAPG ACE
19 - 22 June 2016, Calgary

Badleys will exhibit in the hall as well as presenting and co-chairing at the conference, more in our June newsletter.
Registration is available [here](#).

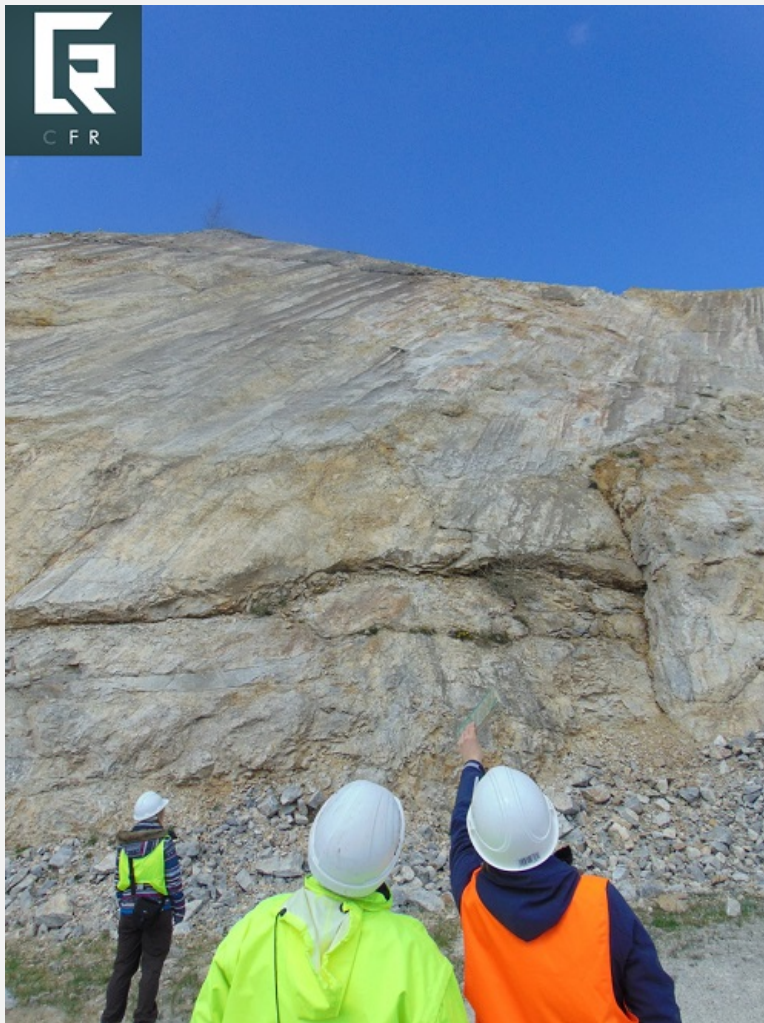
Badleys to deliver Basin Mastery workshop

This is the third in the series of one-day workshops focused on Basin Mastery, hosted jointly by AAPG Europe and PESGB at their training facility in Croydon. The subject of this workshop is Atlantic Equatorial Basins. Neflex are delivering the morning session, while in the afternoon Badleys will focus on the OCT structure and regional/plate-scale evolution of the Equatorial Atlantic, within the context of the opening of the Atlantic as a whole. We will show how plate-scale processes have led to the basin-scale geometries of the conjugate margins observed today. Event details are available [here](#).



Carbonate Fault Rock Project update

The Carbonate Fault Rock Project has had a successful start to the 2016 field season, scoping out this brilliantly exposed fault in Germany (see photo below). We are also growing our database by collecting more samples from Malta and Sicily from several different fault zones in a variety of carbonate lithofacies. If you would like to know more about how your company could join to CFR Project then please [contact us](#) for details.



[follow us on Twitter](#) | [LinkedIn](#) | [pdf version](#) | [feedback](#) | [forward to a friend](#)



E: info@badleys.co.uk T: +44(0)1790 753 472
www.badleys.co.uk

[unsubscribe from this list](#) | [update subscription preferences](#)